

Integrated Vehicle Scheduling and Load Planning

“We are now confident in the planning process and have managed down a number of costs. Significantly the vehicle utilisation has improved by 12% and our freight costs have reduced by 8%. We anticipate this increasing further as our data becomes more accurate and staff get used to the system and improved processes.”

*Graeme Winship,
Director of Logistics,
Bisley Office Furniture*

AutoLogic Systems Limited



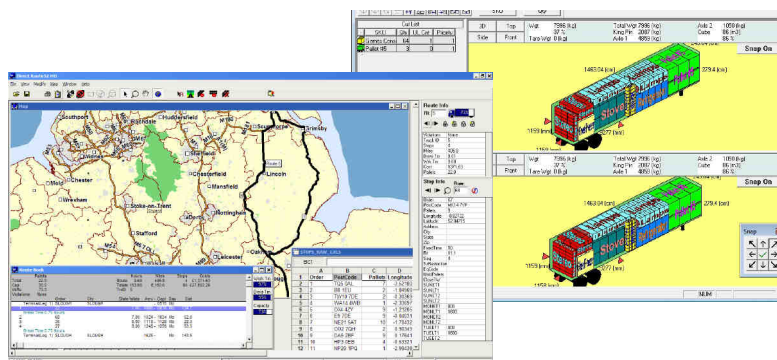
LOOKING FORWARD TO THE FUTURE

Vehicle Routing with Integrated Load Planning

Are you maximising the capacity of your vehicle fleet?

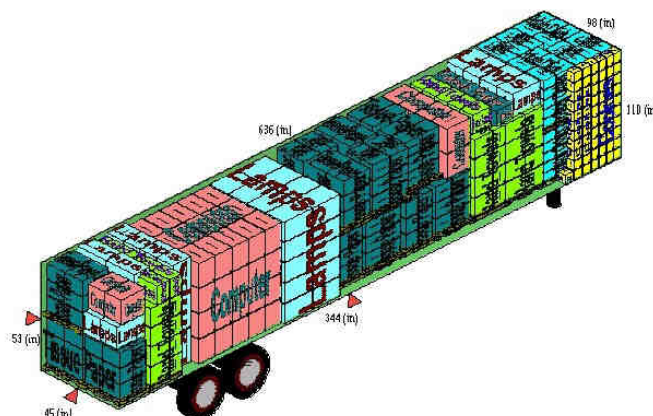
Now you can, effectively plan your loads, avoid conservative estimates of vehicle capacity and be confident of fitting more on your vehicles.

Our integrated fleet scheduling and load planning software package can dramatically increase vehicle loads to minimise vehicle miles and maximize vehicle utilisation.



Our integrated solution:

- Lowers the numbers of miles travelled
- Reduces the number of trucks required
- Optimises routes to reduce costs
- Reduces time taken to route your customers
- Adheres to time restrictions, special stops and equipment constraints
- Increases cube yield and ship fewer loads per year
- Reduces order processing and loading time
- Calculates exact load plans prior to each shipment
- Optimises loads and minimises damage



Contact us for more information or to arrange a personal demonstration:

AutoLogic Systems Ltd
T +44 (0)1844 281380
info@autologic-systems.co.uk
www.autologic-systems.co.uk