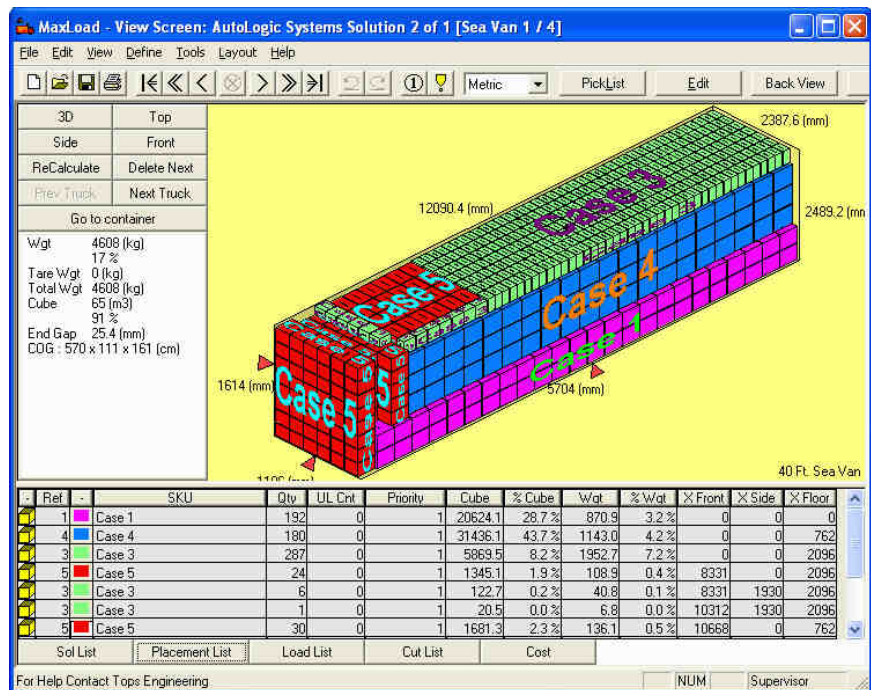




## MaxLoad® Pro

### What is MaxLoad®Pro?

This software optimises the loading of multi-size products into containers, pallets and vehicles improving cubic efficiency, stability and reducing transport costs by 8-25%.



## Package Design & Load Optimisation

*“We are now confident in the planning process and have managed down a number of costs. Significantly the vehicle utilisation has improved by 12% and our freight costs have reduced by 8%. We anticipate this increasing further as our data becomes more accurate and staff get used to the system and improved processes.”*

Graeme Winship,  
Director of Logistics,  
Bisley Office Furniture

### What are the benefits of MaxLoad®Pro?

- Increased cube yield and ship fewer loads per year
- Reduced order processing and loading time
- Exact load plans prior to each shipment
- Optimised loads and minimised damage
- Improved operation efficiency
- Enhance communications among departments and customers

**MaxLoad®Pro  
users can  
improve load  
cubic  
efficiencies and  
reduce transport  
costs by 8-25%**



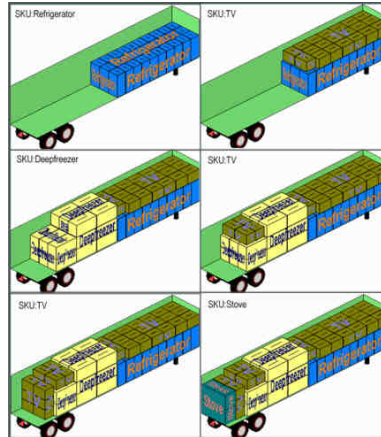


AutoLogic Systems Limited



LOOKING FORWARD TO THE FUTURE

**Key features of MaxLoad® Pro include:-**



**Package  
Design &  
Load  
Optimisation**

- **Cube optimisation using fast intelligent algorithms**
- **Automatic load planning and 3D step-by-step loading diagrams**
- **Optimal mixed pallet configuration**
- **Comprehensive stacking, priority, multi-stop and loading rules**
- **Weight limits and COG calculation**
- **SKU and vehicle database with import facility**
- **True 3D drag & drop load editor**

*MaxLoad®Pro clients include:*

*Argos*

*Bisley Office Furniture*

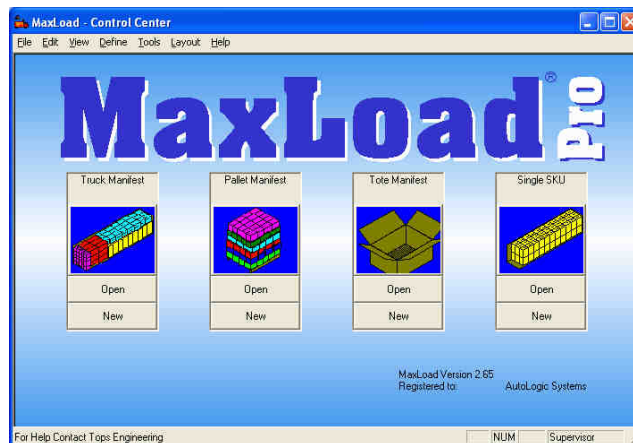
*Homebase*

*Icon Health & Fitness*

*Neal Brothers*

*NYK Logistics*

*Rayware*



**Contact us for more information or demonstration CD:**

AutoLogic Systems Ltd  
60 High Street  
Tetsworth  
Oxfordshire OX9 7AB

T +44 (0)1844 281380  
F +44 (0)1844 281874

[www.autologic-systems.co.uk](http://www.autologic-systems.co.uk)